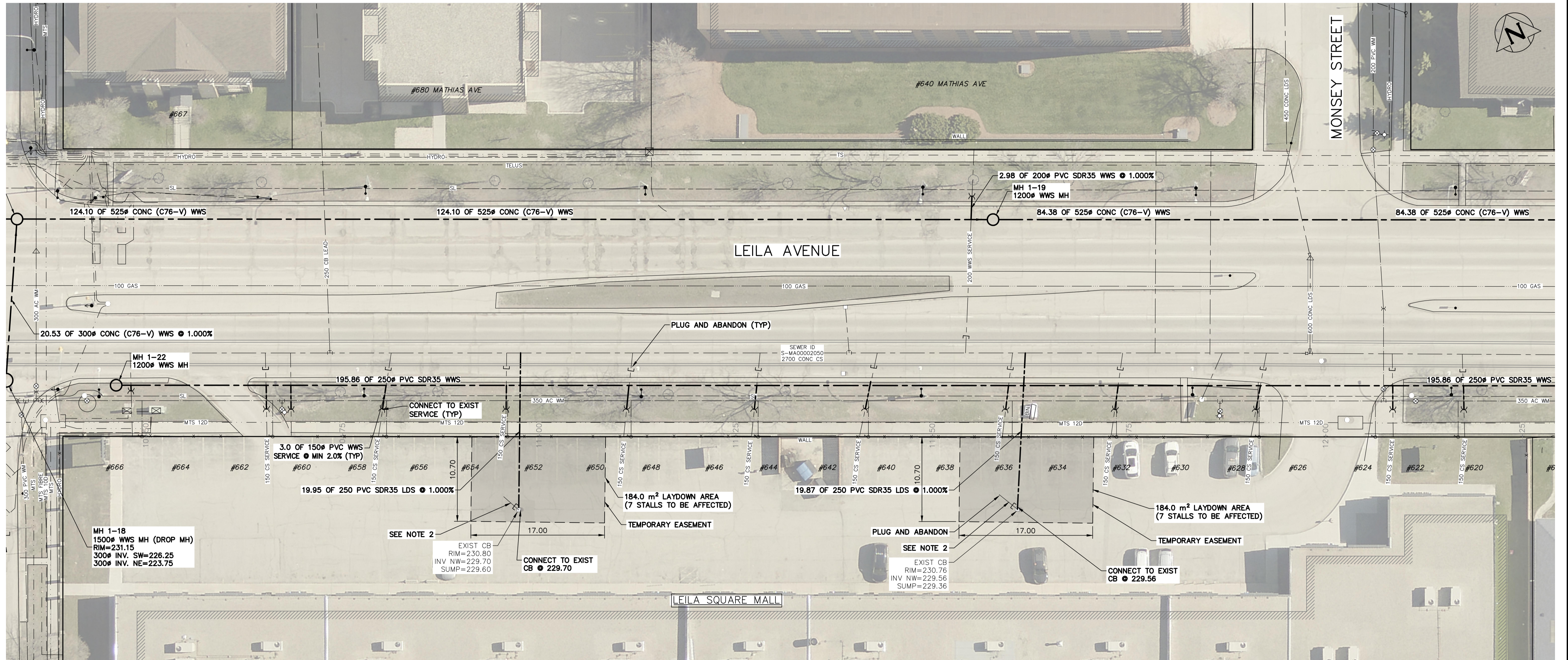
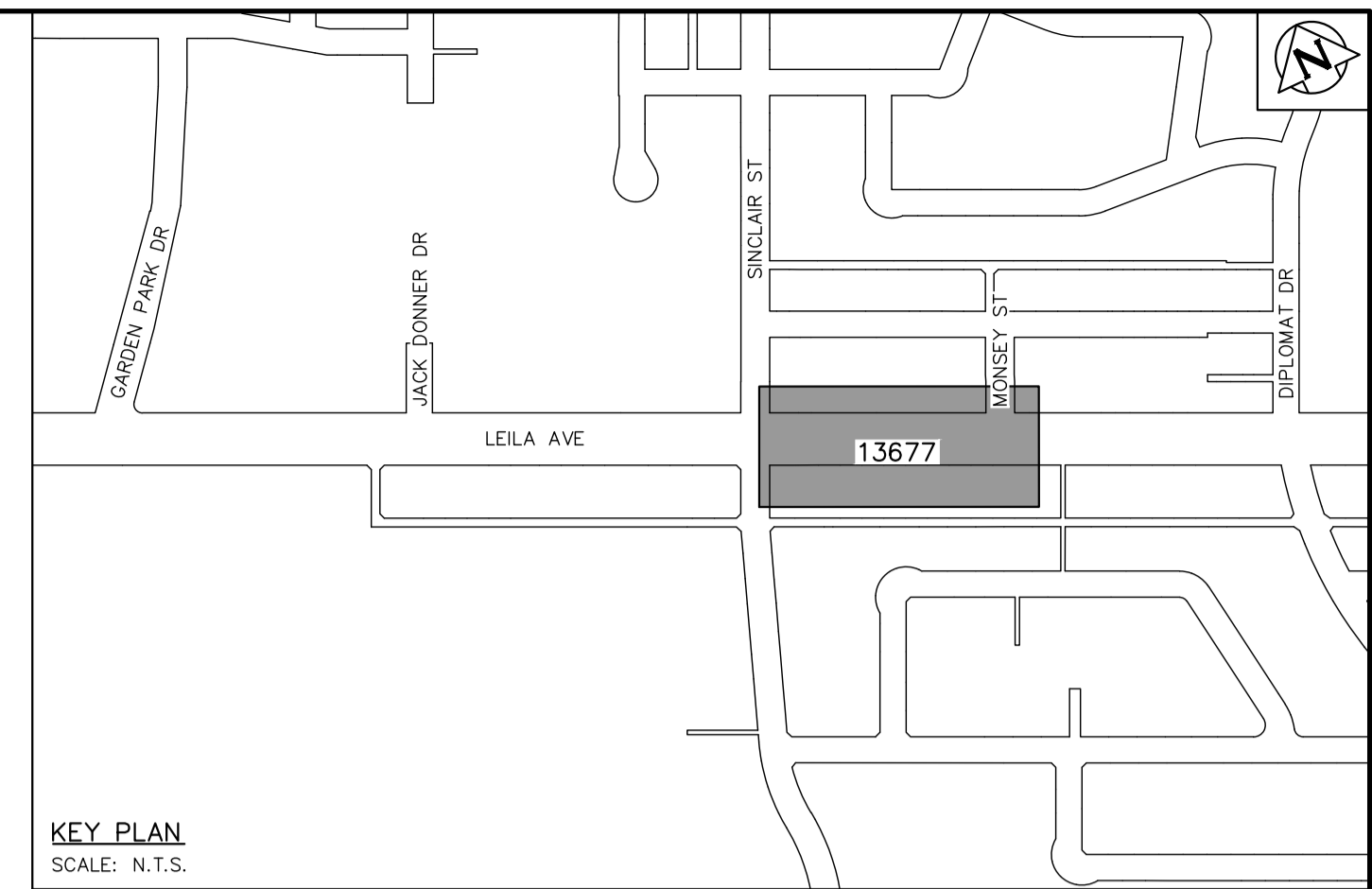


NOTES:

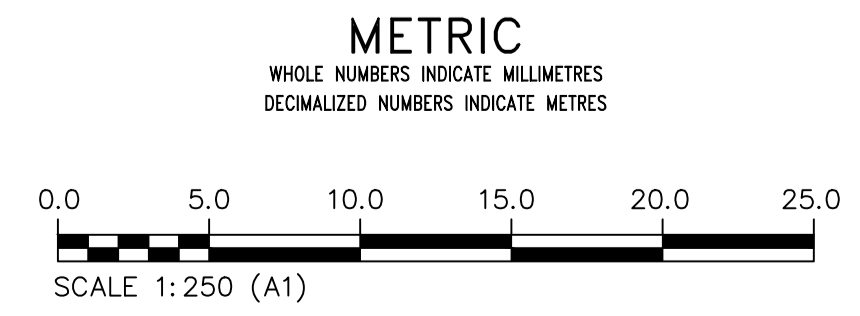
1. EACH WWS SERVICE IS SHARED BY TWO COMMERCIAL UNITS FROM THE MALL.
2. THE EXISTING CATCH BASINS APPEAR TO CONNECT TO TWO OF THE WWS SERVICES. BY DISCONNECTING THEM FROM THE WWS SERVICES AND CONNECTING THEM TO THE 2700# CS, THE STORM FLOW WILL BE SEPARATED FROM THE WWS FLOW.



PROPOSED LAND DRAINAGE SEWER CONNECTIONS FROM LEILA SQUARE MALL (#620-666 LEILA AVE)

**ENGINEERS
GEOSCIENTISTS
MANITOBA**
Certificate of Authorization
KGS Group
No. 245

FOR INDEX PAGE
SEE DWG 13643



WARNING
IF POWER EQUIPMENT OR EXPLOSIVES ARE TO BE USED FOR EXCAVATION ON THIS PROJECT THE CONTRACTOR MUST:
1) NOTIFY THE GAS COMPANY OF THE PROPOSED LOCATION OF EXCAVATION.
2) TAKE PRECAUTION TO AVOID DAMAGE TO GAS COMPANY INSTALLATIONS.
SEE PROVINCIAL REGULATION 210/72 FOR DETAILS

**LOCATION APPROVED
UNDERGROUND STRUCTURES**
SUPV. U/G STRUCTURES COMMITTEE DATE
NOTE:
LOCATION OF UNDERGROUND STRUCTURES AS SHOWN ARE BASED ON THE BEST INFORMATION AVAILABLE BUT NO GUARANTEE IS GIVEN THAT ALL EXISTING UTILITIES ARE SHOWN OR THAT THE GIVEN LOCATIONS ARE EXACT. CONFIRMATION OF EXISTENCE AND EXACT LOCATION OF ALL SERVICES MUST BE OBTAINED FROM THE INDIVIDUAL UTILITIES BEFORE PROCEEDING WITH CONSTRUCTION.

VERTICAL DATUM: CGVD28 (HT2.0 Geoid)
HORIZONTAL DATUM: NAD83 (June 1990), Zone 14

NO.	ISSUED FOR CONSTRUCTION	DATE (MM/DD/YY)	BY
0	ISSUED FOR CONSTRUCTION	2026/03/10	MID
REVISIONS			
NO.	DATE (MM/DD/YY)	BY	REVISIONS

KGS GROUP

DESIGNED BY	MID	CHECKED BY	TLE
DRAWN BY	GEL	APPROVED BY	RBO
SCALE:		RELEASED FOR CONSTRUCTION	
HORIZONTAL	1:250	DATE	DUANE BAKER
VERTICAL	1:50	DATE	2026/03/12

PLOT DATE:

ENGINEER'S SEAL
ORIGINAL DRAWING SEALED BY:
M.A. IANKOVA-DEDOVA
2026/03/11
CONSULTANT DRAWING NUMBER
C1-36

THE CITY OF WINNIPEG
WATER AND WASTE DEPARTMENT
ENGINEERING SERVICES DIVISION

Winnipeg

ARMSTRONG SEWER RELIEF WORKS
CONTRACT 1
PRIVATE SEWER SEPARATION
LEILA SQUARE MALL (#620-666 LEILA AVE)

SHEET **34** OF **46**
CITY DRAWING NUMBER
13677